



XP-300™

Automated Hematology Analyzer

Robust and Reliable!

OTHERS TALK
**SYSMEX
DELIVERS**

Count on Sysmex to do more than
just talk about automation.

To see all that Sysmex delivers, and
what customers are saying, go to
www.sysmex.com/delivers



XP-300 – Robust and Reliable

Accurate and reliable

- Sysmex robustness for the best possible up-time
- Proven technology for accuracy of results
- Linearity to support clinical diagnostics and monitoring
- Sensitive flagging to support diagnosis by the physician

Innovative technology

- Performs rapid and accurate analysis of a 17-parameter CBC
 - Including a 3-part WBC differential with an Absolute Neutrophil Count (ANC)
 - Histograms for RBC, WBC and PLT
 - Automatic floating discriminators
- Produces accurate results comparable to other Sysmex hematology analyzers

Compact and fully integrated

- Small footprint
- Fits easily on a laboratory bench
- Ideal as a back-up for Sysmex X-Series™ and XN-Series™ analyzers

Easy operation and maintenance

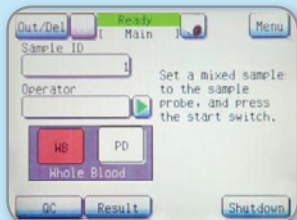
- Minimal training required
- Barcoded QC and reagents
- Auto start-up and shut-down

Safe and secure

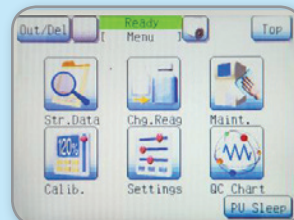
- Non-toxic, biodegradable reagent system
- Two reagents (diluent and lyse) for complete results

Network capability

- Data transfer to LIS via LAN (TCP/IP) or Serial Port (RS-232C)
- Bi-directional interface



Intuitive touch screen menus simplify operation



QC data is available on board with comprehensive reports and also available through Insight™ quality control program.

Sysmex Corporation
1-5-1-Wakinohama-Kaigandori
Chuo-ku, Kobe 651-0073, Japan
Tel. +81 (78) 265-0521
www.sysmex.co.jp

Sysmex America, Inc.
577 Aptakistic Road
Lincolnshire, IL 60069, U.S.A.
Tel. +1 (800) 379-7639
www.sysmex.com/us

Sysmex Canada, Inc.
5045 Orbitor Drive
Building 9, Suite 401
Mississauga, ON, L4W 4Y4, Canada
Tel. +1 (905) 366-7900
www.sysmex.ca

Sysmex Latin America and the Caribbean
Rua Joaquim Nabuco 615 - Bairro Cidade Jardim
São José dos Pinhais
Paraná - Brasil - CEP 83040-210
Tel. +55 (41) 2104-1314
www.sysmex.com.br



©2013 Sysmex America, Inc.
MKT-10-1195 07/2013